

Sarcina maxima 70-105 tf

Masa 42 kg

Descriere

Sarcinile se transporta cu doua sau trei patine cu role: una sau doua prevazute cu reazeme fixe si una cu reazem oscilant.

Patinele cu role sunt utilizate impreuna cu un cric hidraulic lateral.

Domeniul de utilizare

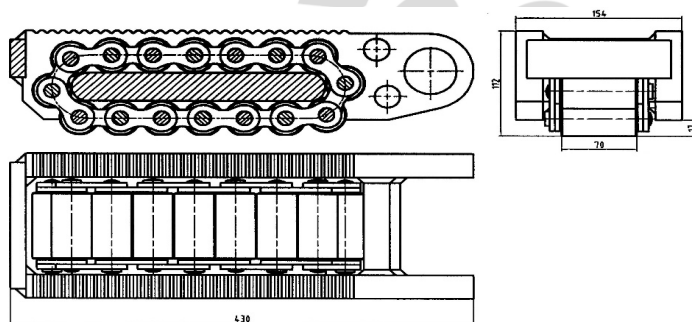
Patinele cu role permit deplasarea sarcinilor foarte grele, masini si utilaje de gabarite foarte mari, blocuri de beton, etc.





Avantaje

Suprafata de rezemare cu stabilitate foarte buna;

Atasarea comoda a reazemelor pe corpul patinei;

Fiabilitate ridicata.



Sarcina maxima	Patina cu role, echipata cu reazem	Patina cu role, neechipata	Reazem fix	Reazem oscilant
tf				
70	HPR-70	2 x HPR-035	1 x HRF-035	1 x HRO-035
105	HPR-100	3 x HPR-035	2 x HRF-035	1 x HRO-035